

SMART HVAC BUILDING CONTROL SOLUTION

Fan Coil Units/DX-System

Applicated to various Air-Conditioning System



BMS COMMUNICATION TYPES



AIR

AIR QUALITY SENSOR

TEMP PM2.5 CO2 TVOC HCHO HUMI



Installation method:

Flush Mount



Wall Mount / Desk Stand



HVAC CONTROLS

FOR DIFFERENT HVAC SYSTEMS AND BMS SYSTEMS

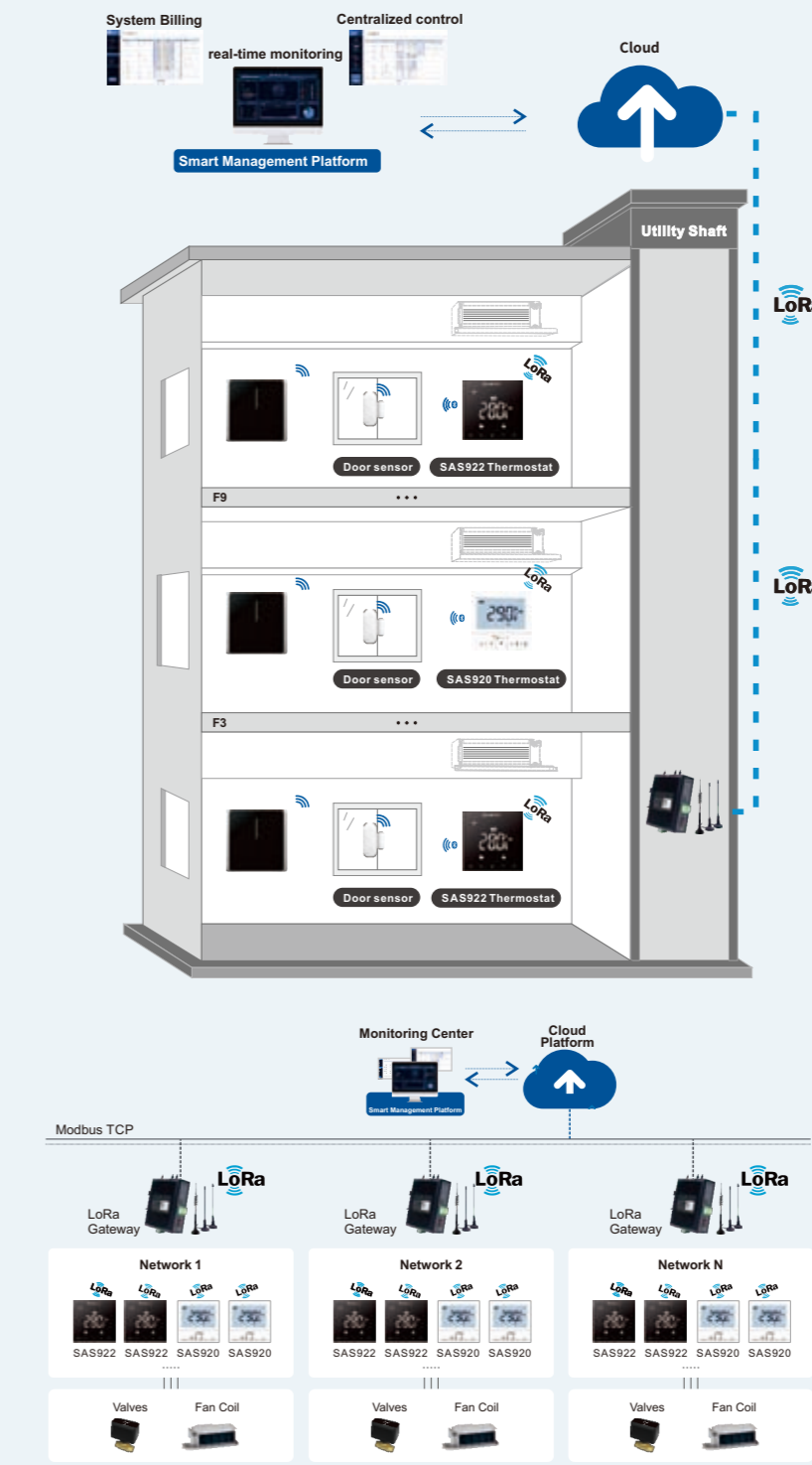
BMS Systems Fan Coil Units On/Off Control Modulating Control Multi-Stage Heat/Cool Auto changeover
Cooling Only Auto Fan EC Fan Proportional-Integral Modulating Controls PI Controls



LORA / LORAWAN

WIRELESS CONNECTION

Retrofit Building Easy Deployment Energy Saving
Stronger Penetrating Signal Wider Coverage



www.saswell.com



For More Information

SHENZHEN SASWELL TECHNOLOGY INC.

Room 1601-1603, Floor 16, Building 4, Tianan Cloud Park, Longgang District, Shenzhen China 518000

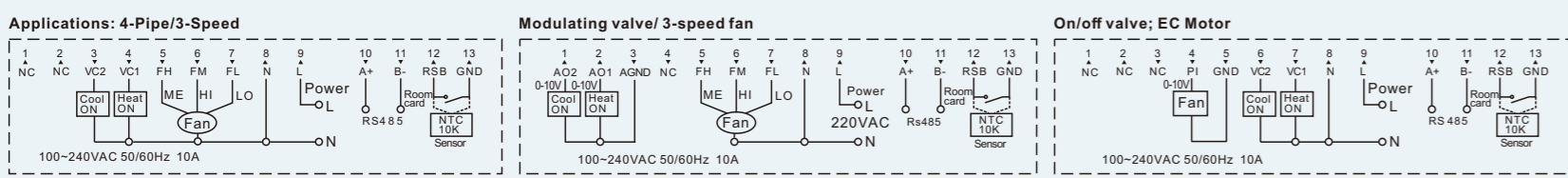
Tel: 0086-755-28906113

Mail: info@saswell.com

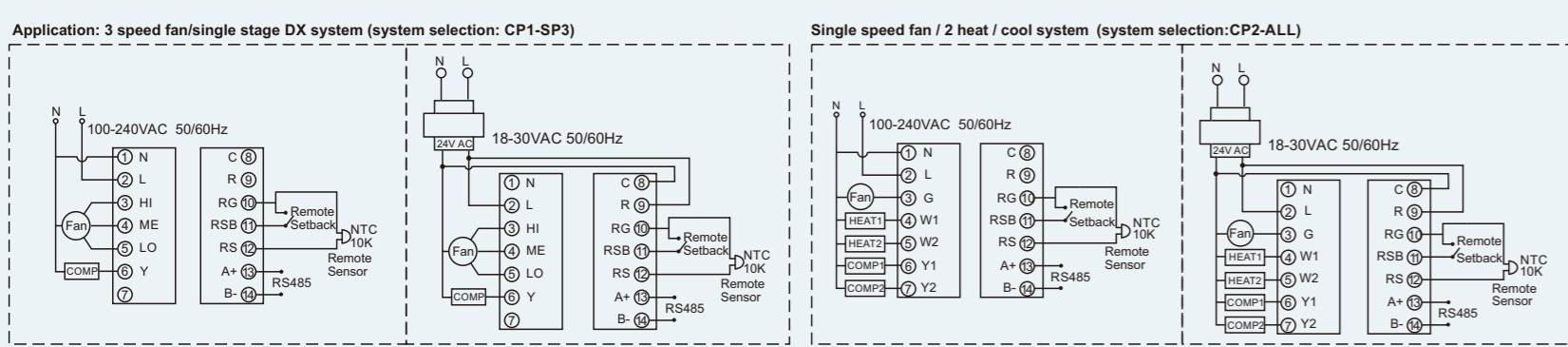
HVAC Thermostat



Model	Power		Conn.		Type of FCU		Type of Actuator		Fan Type		Schedule	Remote Sensor	Room Card
	220V	24V	RS-485	WiFi	2-Pipe	4-Pipe	0-10V	On/Off	3-Speed Fan	EC Motor Fan	7 days Programmable		
SAS965FCT-4-F3-RS-485	✓	✓	✓	✓	✓	✓	✓	✓	✓			✓	✓
SAS965FCT-4-EC-RS-485	✓	✓	✓	✓	✓	✓	✓	✓		✓		✓	✓
SAS965PIT-4-F3-RS-485	✓	✓	✓	✓	✓	✓	✓	✓	✓			✓	✓
SAS922XFCT-4-F3-RS-485	✓	✓	✓	✓	✓	✓	✓	✓	✓			✓	✓
SAS922XFCT-4-F3-RS	✓	✓	✓	✓	✓	✓	✓	✓	✓			✓	✓
SAS922PIT-2-F3-485	✓	✓	✓	✓	✓	✓	✓	✓	✓		✓	✓	✓
SAS922PIT-ECH-485	✓	✓	✓	✓	✓	✓	✓	✓		✓		✓	✓
SAS923PIT-2-F3-RS-485	✓	✓	✓	✓	✓	✓	✓	✓	✓			✓	✓
SAS923PIT-2-F3-RS	✓	✓	✓	✓	✓	✓	✓	✓	✓			✓	✓
T29MTW-7-S-485	✓	✓	✓	✓	✓	✓	✓	✓	1/3		✓	✓	✓
SAS922XMTW-7S-WIFI(TY)-485	✓	✓	✓	✓	✓	✓	✓	✓	1/3		✓	✓	✓



Model	Power		Conn.		Stage		Fan Type		Room card	Schedule	External Sensor Option
	220V	24V	RS-485	WiFi	Heat/Cool	Cool only	3-Speed	Single Speed		7 days Programmable	
T29MTW-7-S-485	✓	✓	✓	✓	2H/2C	2/1	✓	✓	✓	✓	✓
SAS965SLP-7-F3-S	✓	✓	✓	✓	2H/2C	2/1	✓	✓	✓	✓	✓
SAS922XMTW-7S-WIFI(TY)-485	✓	✓	✓	✓	2H/2C	2/1	✓	✓	✓	✓	✓
T18BUTW-7-WIFI(TY)	✓	✓	✓	✓	3H/2C	✓	✓	✓	✓	✓	✓



Lora Thermostat



SAS921FCT-2-F3-RS-L SASWG08-Y

Thermostat Specification

- Power Supply: 100-240VAC 50/60Hz
- Fan Relay Output: 5(3)A
- Communication Distance: >600M
- Communication: LoRa / LoRa WAN
- Fan Output: EC Motor Fan(0-10V), AC 3-speed Fan
- Valve Compatibility: ON/OFF Valves,0-10V Modulating Valves, PICV valves
- External Options: External Sensor or Window card/Room Card
- Color: White
- Protection Rating: IP21
- Size: 86 x 86 x 13mm (L*W*H)

Small-Caliber High-Precision Valves & Actuators



Actuator

SA905

- Power Supply: 220VAC / 24VAC
- Stroke: 6mm /8MM
- Nominal Force: 160N
- Connection To Valve: M30 x 1.5MM
- Size: 40 x 55 x 85mm
- Running Time: ≤60s
- Control Mode: 0-10V / ON/OFF
- Protection: IP54



Motorized Zone Valve

VB20 Series

- PN Pressure: PN25
- Valve Size: DN15-DN32
- Valve Structure: 2-way and 3-way
- Thread: Female
- Actuator Connection: M30 x 1.5mm
- Medium Temperature: -10~120°C
- Material: Brass



Motorized Ball Valve

SV80 SERIES

- Media: chilled or hot water, 60% glycol
- Flow Characterize: 2-way or 3 ways
- Operating Mode: 3-point control 924VAC0 or on/off
- Power supply: AC110V AC220V, AC230V, AC24V etc.
- Power Consumption: 5W (during valve position change)
- Running Time: 15sec.(50Hz)/12 sec.(60Hz)

Actuator

SA95X

- Power Supply: 100-240VAC / 24VAC
- Stroke: 4.5±0.5mm
- Nominal Force: 80N-130N
- Connection To Valve: M30 x 1.5MM
- Size: 41.6 x 77.4mm

PICV Valve

VB10 Series

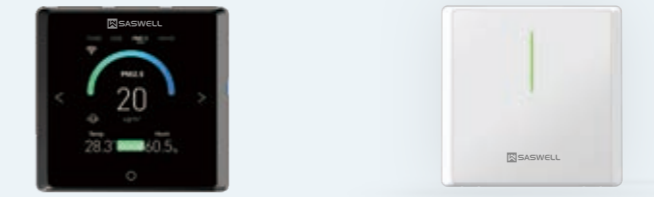
- Pressure Class: PN25
- Valve Size: DN15-DN32
- Actuator Connection: M30 x 1.5mm
- Medium Temperature: -10~120°C
- Material: Brass
- Housing Taps: G1/4"
- Operating Differential Pressure Range: 30~400 KPa

Motorized Ball Valve

SV60 SERIES

- Supply Voltage: AC110V, AC230V
- Self Power Consumption: <6.5W
- Nominal Pressure: 1.6MPa
- The Valve Action Time: The Opening Time: ≤18s
- Opening And Closing Time: ≤17s
- Ambient Air Temperature: 5-40°C
- The Temperature Of The Medium Pipeline: 5-90°C

Sensor



AQC912-PCTH-485-WIFI(24V) AQC912X-PCTH-485(24V)

- HUMI
- PM2.5
- CO2
- TVOC
- HCHO
- TEPM

Air Quality Sensor

- Power Input: 24VDC/AC
- Display: 2.8-inch color screen
- Wireless Communication: Tuya WiFi(2.4G)
- NTC 10K/NTC 100K Temperature Detection Range: -10°C~+50°C
- Rs485 Communication Interface: RTU format MODBUS protocol,two-wire system
- CO2: 400-2000ppm
- TVOC: 0-6.000mg/m³
- HCHO: 0-1.00mg/m³
- PM2.5: 1-999 ug/m³



T18XAIR-485-WIFI(TY)



T18AIR-485

- HUMI
- PM2.5
- CO2
- TVOC
- HCHO
- TEPM

- Power Input: 12-24VDC
- Display: 2.8-inch color screen
- Wireless Communication: Tuya WiFi(2.4G)
- NTC 100K Temperature Detection Range: -10°C~+50°C
- Rs485 Communication Interface: RTU format MODBUS protocol, two-wire system
- CO2: 400-2000ppm
- TVOC: GOOD/OK/POOR
- HCHO: 0-1.00mg/m³
- PM2.5: 1-999 ug/m³



Outdoor Wall-mounted Temperature And Humidity Sensor

STH717

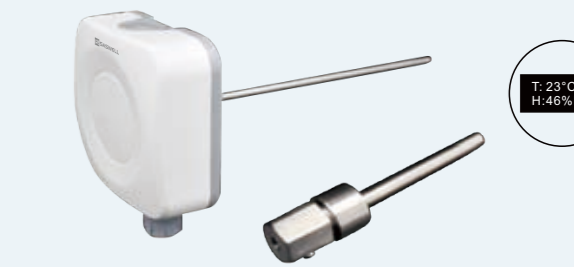
- Measurement Range: 0-50°C/40-60°C/0-100°C option,0-100%RH
- Power Input: 24VDC/AC(Default), AC220V(AC Customized)
- Output Signal: 0-10V/4-20mA, Modbus RS-485
- Accuracy: ±0.5°C, ±3%RH
- Power Consumption: Imax 0.5W
- IP Rating: IP65
- Optional: 1.3inch, 2.8inch LCD Display



Pressure Difference Detection

SPD716

- Measurement Range: 0-50/0-100/±50/±100Pa
- Power Input: 24VDC/AC
- Output Signal: 0-10V/4-20mA and RS485
- Accuracy: ±1%F.S
- Power Consumption: ≤1w
- IP Rating: IP65
- Optional: 1.3-inch LCD display available



Liquid Temperature Transmitter

STH717W

- Measurement Range: 0-50°C/-20-80°C/0-100°C, 0-99%RH
- Power Input: 24VDC/AC
- Output Signal: 0-10V/4-20mA, Modbus RS-485
- Accuracy: ±0.5°C(15°C-25°C); ±1°C(-30°C-15°C, 25°C-60°C); ±1.5°C(80°C-100°C)
- Power Consumption: Imax 0.5W
- Wiring Standard: cross-sectional area<1.5mm
- Installation: pipeline installation
- IP Rating: IP65
- Optional: LCD display available

Duct Temperature and Humidity

STH717F

- Measurement Range: 0-50°C/40-60°C/0-100°C option,0-100%RH
- Power Input: 24VDC/AC
- Output Signal: 0-10V/4-20mA, RS-485
- Accuracy: ±0.5°C, ±3%RH
- Power Consumption: Imax 0.5W
- IP Rating: IP65
- Dimension: 119 x 97 x 268mm
- Optional: LCD display available

Smart Hotel / Apartment

Low Cost Smart Upgrade



HDC218-FCU

- ◆ Power supply: 100~240VAC / 50~60Hz
- ◆ Built-in power conversion module, provides 24V/1A output for valve actuator power supply
- ◆ Supports BACnet MS/TP and Modbus protocols
- ◆ 3 Analog outputs (AO), 5 Digital Outputs (DO), 3 Digital Inputs (DI) or Analog Inputs (AI)
- ◆ Suitable for FCU systems: compatible with AC 3-speed fans and 0~10V DC fans, supports both on/off valves and 0~10V modulating valves.
- ◆ Suitable for RTU systems: supports single-stage and multi-stage system control.
- ◆ Supports keycard switch, window contact, and external sensors. With HDC-IO expansion module, can control lighting, curtains, occupancy sensors, etc.
- ◆ Dimensions: 121 × 93 × 47.3 mm



Central Controller

SAS965-HMI

- ◆ Power supply: 9~30VDC, with DC carrier communication and power supply
- ◆ 4-inch full-capacitive touch color display, resolution 480 × 480 dpi
- ◆ Temperature display range: 0~60°C, accuracy: ±0.5°C
- ◆ Humidity display range: 10~99%, accuracy: ±5%
- ◆ Interface: 2-wire DC carrier communication; external NTC sensor supported
- ◆ Optional Wi-Fi function with mobile app remote control
- ◆ Dimensions: 86 × 86 × 11 mm



4-inch Central Control Screen

10.1-inch Home Automation Panel

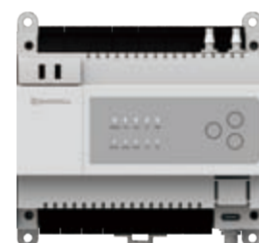
- ◆ Screen: 10.1-inch multi-touch screen / resolution 1920×1200
- ◆ Storage: 2GB RAM / 8GB ROM
- ◆ Camera: IPS 5 million pixels / privacy protection paddle
- ◆ Audio: Speaker * 2 / microphone * 2
- ◆ Wireless protocol: Wi-Fi / Zigbee3.0 / Bluetooth 5.0 BLE / BLE mesh
- ◆ Sensor: TOF Proximity Sensor / Ambient Light Sensor / Temperature and Humidity Sensor
- ◆ Operation mode: Touch screen / Physical buttons / Voice / APP
- ◆ Interface: USB type-C (Debug only, Input: DC12V, 1.0A Max)
- ◆ Work temperature: 0~40°C
- ◆ Work humidity: 5%~90%RH non-condensing state
- ◆ Input: 100~240V~, 50/60Hz



10.1-inch Home Automation Panel

Wireless For EU Type	Frequency	Max. Power
Wi-Fi	2400~2483.5MHz	20dBm
Bluetooth	2400~2483.5MHz	10dBm
Zigbee	2400~2483.5MHz	12dBm

VAV Industrial Facility / Labs / Clean Room



VAV Controller

HDC218-VAV

- ◆ Power supply: 100~240VAC / 50/60Hz
- ◆ Built-in power conversion module, provides 24V/1A output for damper actuator power supply
- ◆ Integrated high-precision digital differential pressure sensor, low measurement error
- ◆ Supports BACnet MS/TP and Modbus protocols
- ◆ 3 Analog outputs (AO), 5 Digital Outputs (DO), 3 Digital Inputs (DI) or Analog Inputs (AI)
- ◆ Expandable I/O via HDC-IO module
- ◆ Applicable for VAV boxes, Venturi valves, variable air volume dampers, fume hood controls, etc.
- ◆ Dimensions: 121 × 93 × 47.3 mm



HMI

SAS965-HMI

- ◆ Power supply: 9~30VDC, with DC carrier communication and power supply
- ◆ 4-inch full-capacitive touch color display, resolution 480 × 480 dpi
- ◆ Temperature display range: 0~60°C, accuracy: ±0.5°C
- ◆ Humidity display range: 10~99%, accuracy: ±5%
- ◆ Interface: 2-wire DC carrier communication; external NTC sensor supported
- ◆ Optional Wi-Fi function with mobile app remote control
- ◆ Dimensions: 86 × 86 × 11 mm

